

MEDICAL

Country Doctor Community Health Centers

After-Hours Clinic..... Visit in Person only
Swedish Cherry Hill, 550 16th Ave
M-F: 6-9:30pm; Sa Su, noon-9:30pm. After-hours care for acute conditions with a sliding fee scale based on income.

Carolyn Downs Center 206.299.1900
2101 E Yesler Way, Suite 150
M, Tu, Th, F: 9am-5pm; W: 9am-8pm. Call for appointment. Serves adults & children.

Community Clinic 206.299.1600
500 19th Ave E
M, Th, F: 9am-5pm; Tu W: 9am-8pm; Call for appointment.

Harborview Medical Center 206.520.5000

Adult Medicine Clinic
325 9th Ave, 3rd Floor, West Clinic.
M-F: 8:30am-5pm

Consulting Nurse Line 206.744.2500
Telephone only: Available 24hrs

International Medicine Clinic.. 206.520.5000
325 9th Ave, Ground Floor, West Clinic
M-W, F: 8am-4:30pm; Th: 8am-8pm.
Health care for refugees & immigrants, age 16+, who have been in U.S. less than 12 mos. Interpreters available.

Pioneer Square Medical Clinic 206.744.1500
206 3rd Ave S
M, Tu, Th, F: 7am-5pm; W: 8am-5pm. Established patients call for appt. New patients walk-in when clinic opens.

Third Avenue Center 206.521.1231
2028 3rd Ave
M-F, 8am-4pm. Visit in person only. First appt. at 8:30am.

International Community Health Services

Holly Park Clinic 206.788.3500
3815 S Othello St
M Tu Th-Sa: 7:30am-6pm; W, 8:30am-7pm.

International District Clinic..... 206.788.3700
720 8th Ave S
M, Tu, F: 7:30am-6pm; W Th, 7:30am-7pm; Sa: 8:30am-5pm.

Neighborcare Health

45th Street Clinic 206.633.3350
1629 N 45th St
M, Th F, 8am-5:30pm; W: 9am-5:30pm; Tu, 8am-7pm; Sa: 9am-3pm; W hours vary. **Homeless Youth Clinic:** W, Th: 6-9pm, for youth ages 12-26.

Ballard Homeless Medical Clinic..206.782.5939

Nyer Urness House, 1753 NW 56th St, Ste 200
M,Tu, Th, F: 9am-4:30pm; W: 10am-4:30pm. Serves homeless people in Ballard and primarily homeless, low-income people.

Columbia City Clinic 206.461.6957
4400 37th Ave S
M, Th: 7:45am-7:30pm; Tu, 7:45am-6pm; W: 9am-6pm; F: 7:45am-5pm; Sa: 8am-4pm

High Point Clinic 206.461.6950
6020 35th Ave SW
M, W, Th: 7:30am-7:30pm; Tu, F: 7:30am-5:30pm; Sa: 9am-12:30pm. Opens at 9:30am: 1st & 3rd W.

Lake City Clinic 206.417.0326
12721 30th Ave NE, Suite 101
M: 8am-7pm; Tu: 8am-5pm; W: 9am-5pm; Th, F: 8am-5pm.

Meridian Clinic 206.296.4990
10521 Meridian Ave N, Suite A
M Tu F, 8am-5:30pm; Th, 8am-6:30pm; Sa, 8am-4pm; W hours vary.

Pike Market Clinic 206.728.4143
1930 Post Alley
M, Tu, Th: 8am-5pm; W: 9:30am-5pm; F: 8am-4pm. Only serves adults.

Rainier Beach Clinic 206.722.8444
9245 Rainier Ave S
M-Th: 7:30am-7:30pm; F: 7:30am-5:30pm; Sa: 10am-1:30pm. Opens at 9am 1st & 3rd W.

St. Vincent de Paul Aurora Clinic 206.548.7600
13555 Aurora Ave N
M W F, 11am-4:30pm. Call for an appointment.

Public Health

Downtown Health Center 206.477.8222
2124 4th Ave
M-F: 8am-5pm.

Lahai Health—Haller Lake.....206.363.4105 x230
2152 N 122nd St
M: 4-8pm; W: 5-9pm; F: 9am-1pm; Call for appointment. \$10 donation requested. No one turned away if unable to pay.

RotaCare Free Clinic Visit in Person
North Helpline, 12736 33rd Ave NE
Sa: 10am-1pm. Free basic healthcare for acute needs. Visit in person only. Answers calls only on Saturdays.

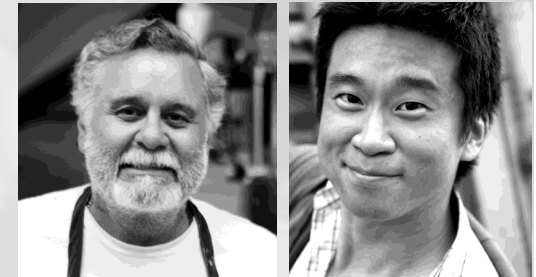
Seattle Indian Health Board..... 206.324.9360
611 12th Ave S, Suite 200
M-F: 8:30am-6pm; Sa: 9am-2pm. Open to anyone.

***Call Ahead First!**

SEATTLE

Health Services

***Call Ahead First!**



November 2021

Brochures updated monthly at www.crisisconnections.org

During the Covid -19 response, please call ahead to verify if these agencies have temporarily modified their services and hours.





DENTAL REFERRAL

DENTISTLINK 844.888.5465
www.dentistlink.org
Call M Tu Th F, 9am-5pm; W, 10am-5pm.

DENTAL

International Community Health Services

Holly Park Clinic 206.788.3502
3815 S Othello St
M, Tu, Th-Sa: 7:30am-6pm; W, 8:30am-7pm.

International District Clinic.... 206.788.3757
720 8th Ave S
M-Sa: 7:30am-6pm. Call for appointment.

Neighborcare Health

Sites may focus on serving children under 18 and their parents unless otherwise noted.

45th Street Clinic 206.548.2964
1629 N 45th St
M Th F, 8am-5:30pm; Tu, 8am-7pm; Sa, 9am-3pm. W Hours vary.

Georgetown Clinic..... 206.461.6943
6200 13th Ave S
M-F: 7:15am-6pm.

High Point Clinic..... 206.461.6966
6020 35th Ave SW
M-F: 7am-5:30pm, Sa: 9am-1pm. Closed for lunch 11:45am-12:30pm.

Rainier Beach Clinic..... 206.461.6981
9245 Rainier Ave S
M-F: 6:45am-5:30pm. Closed from: 8-9:30am 1st & 3rd W.

Pacific Tower Clinic..... 206.548.5850
1200 12th Ave S, Suite 401
M-F: 7am-6pm. Serves adult established patients of other Neighborcare clinics and adults needing urgent care.

Odessa Brown Children's Clinic 206.987.7210
2101 E Yesler Way, Suite 100
M-Th: 8am-5pm. F: 8am-1pm. General dental care for children ages 1-16.

Pima Community Dental Clinic. 206.529.6677
9709 3rd Ave NE
Hours vary by term, usually M-Th: 8am-5pm & F: 8am-3pm. Dental care at student teaching clinic.

Public Health Centers

Columbia City Dental Clinic ... 206.535.2497
4400 37th Ave S
M-F: 8:30am-5:30pm. Serves children ages 1-18 and pregnant women.



Downtown Clinic..... 206.477.8300
2124 4th Ave
M-F: 8am-5pm. Serves only people experiencing homelessness, ages 13+.

North Seattle Clinic..... 206.205.8580
12359 Lake City Way NE
M-F: 8am-5pm. Serves youth ages 1-18 and pregnant women.

Sea Mar Community Health

South Park Dental Clinic..... 206.762.3263
8915 14th Ave S
M-Sa: 8am-5pm. Emergency & routine dental services for adults & children.

Sea Mar—White Center Clinic... 206.965.1005
9650 15th Ave SW Suite 100, Seattle
M-Sa: 8am-5pm. Emergency and routine dental for all

Seattle Indian Health Board 206.324.9360
611 12th Ave S
M-F: 8:30am-6pm Call for appointment. Serves American Indian and Alaska Native communities.

UW—School of Dentistry

Dental Student Clinic 206.616.6996
1959 NE Pacific St, Room B-307
M-F: 8am-5pm. Dental services provided by students supervised by experienced, licensed dentists.

Urgent Care Clinic..... 206.543.5850
1959 NE Pacific St, Room B-307
M-F: 8:30am-4:30pm. Closed for lunch, noon-1:30pm.

MOBILE DENTAL

Mobile Dental Van 425.284.1950
Recorded message. Free or low cost dental care for those without insurance.

EYE CARE

International Community Health Services - Int'l Dist. Vision Clinic..... 206.788.3505
720 8th Ave S, Seattle
M-F: 8am-5pm
Operates a vision clinic for adults and children. Provide complete eye exams and an optical shop.

UpLift Northwest 206.728.5627
2515 Western Ave
Call to schedule appointment or drop-in: Th: 7:45am. Free eye exams and glasses for those with no Medicaid or other insurance coverage. Closed July & August.



OneSight 888.935.4589
M-F: 8am-5pm Eastern Time
Administers a program to provide free glasses to people in need. Must have a letter verifying financial and eyewear need from a local non-profit and current prescription.

YWCA of Seattle/King County -

Health Access Department 206.461.4420
1118 5th Ave
9am-5pm. Voicemail only. Provides vouchers for free eye exams and glasses to anyone who is homeless in the city of Seattle.

NEEDLE EXCHANGE

Capitol Hill Needle Exchange 206.263.2000
1161 11th Ave, Robert Clewis Center 2
M-Sa: 6:30-8:30pm. Provides new sterile syringes in exchange for used ones. Distributes clean injection supplies and sexual safety items. Provides harm reduction education and vein care consultation.

People's Harm Reduction Alliance Visit in Person

1415 NE 43rd St and University Way NE, Table located in alley behind Post Office. Visit in person.
Su: 1-5pm; M, Tu, Th: 5-7pm; F: 1-5pm. Provides new sterile syringes in exchange for used ones. Distributes clean injection supplies and sexual safety items. Provides harm reduction education and vein care consultation.

HEALTH INSURANCE

Health and Dental Insurance Referrals 800.756.5437

401 5th Ave
Call M-F: 8am -5pm. Provides information and referral to health care providers for low-income adults and children living in King County. Includes for-profit medical and dental clinics that accept Medicaid.

Washington Apple Health provides medical benefits for persons below 138% of the Federal Poverty Level not eligible for Medicare. Call the WA Health Plan Finder at 855.923.4633 or visit www.wahealthplanfinder.org to sign up. Programs listed in this brochure bill Apple Health unless otherwise indicated.

***Call Ahead**