

MEDICAL

Country Doctor Community Health Centers

After-Hours Clinic.....206.709.7199

2101 E Yesler Way, Suite 150

M-F: 6-9:00pm; Sa Su: 11am-5pm. After-hours care for acute conditions with a sliding fee scale based on income.

Carolyn Downs Center 206.299.1900

2101 E Yesler Way, Suite 150

M, Th, F: 9am-5pm, Tu, W: 9am-8:30pm, Call for appointment. Serves adults & children.

Community Clinic 206.299.1600

500 19th Ave E

M, Th, F: 9am-5pm; Tu W: 9am-8:30pm; Call for appointment.

Harborview Medical Center 206.520.5000

Adult Medicine Clinic

325 9th Ave, 3rd Floor, West Clinic.

M, W, Th, F: 8:00am-4:30pm, Tu: 8am-8pm

International Medicine Clinic.... 206.520.5000

325 9th Ave, Ground Floor, West Clinic

M-W, F: 8am-4:30pm; Th: 8am-8pm.

Healthcare for refugees & immigrants, age 16+, who have been in U.S. less than 12 mos. Interpreters are available.

Pioneer Square Medical Clinic.. 206.744.1500

206 3rd Ave

M, Tu, F: 8:05am-4pm; W: 9am-4pm. Closed on Thursdays until July 4, 2022.

Third Avenue Center 206.521.1231

2028 3rd Ave

M, Tu, Th, F: 8am-4pm. First appt. at 8:05am, W: 8am-4pm. First appt. 9:15am.

International Community Health Services

Holly Park Clinic 206.788.3500

3815 S Othello St

M, Tu, Th-Sa: 7:30am-6pm; W: 8:30am-7pm

International District Clinic..... 206.788.3700

720 8th Ave

M, Tu, F: 7:30am-6pm; W, Th: 7:30am-7pm, Sa: 8:30am-5pm

Neighborcare Health

45th Street Clinic 206.633.3350

1629 N 45th St

M-F, 8am-5:00pm; 1st & 3rd W: 9:30am-5pm. Homeless Youth Clinic: W, Th: 6-9pm, for youth ages 12-26.

Ballard Homeless Medical Clinic206.782.5939

Nyer Urness House, 1753 NW 56th St, Ste 200

M-Th 9am-4:30pm, Phone Appointments: F: 1-4:30pm Serves homeless people in Ballard and primarily homeless, low-income people.

Columbia City Clinic 206.461.6957

4400 37th Ave S

M-F:8am-5pm; Sa: 9:30am -1:30pm; 1st & 3rd W: 9:30am-5pm

High Point Clinic..... 206.461.6950

6020 35th Ave SW

M-F: 8am -5pm

Lake City Clinic..... 206.417.0326

12721 30th Ave NE, Suite 101

M-F: 8am-5pm

Meridian Clinic 206.296.4990

10521 Meridian Ave N, Suite A

M-F, 8am-5:00pm; 1st & 3rd W: 9:30am-5pm

Pike Market Clinic 206.728.4143

1930 Post Alley

M, Tu, Th: 8am-5pm; W: 9:30am-5pm; F: 8am-4pm. Only serves adults.

Rainier Beach Clinic..... 206.722.8444

9245 Rainier Ave S

M, Tu, Th: 7:30am-7:30pm; W: 7:30am-6pm; F: 7:30am-5:30pm; Sa:9:30am-1:30pm. Opens at 9:30am 1st & 3rd W.

St. Vincent de Paul Aurora Clinic...206.548.7600

13555 Aurora Ave N

W: 9am-4:30pm; F: 10am-3:30pm Call for an appointment.

Public Health

Belltown Health Center..... 206.477.8222

2124 4th Ave

M-F: 8am-5pm.

Lahai Health—Haller Lake ... 206.363.4105 x230

2152 N 122nd St

M: 4-8pm; W: 5-9pm; F: 9am-1pm; Call for appointment. \$10 donation requested. No one turned away if unable to pay.

Seattle Indian Health Board..... 206.324.9360

611 12th Ave S

M-F: 8:30am-6pm; Sa: 9am-2pm. Open to anyone. Primarily serves American Indians & Alaska Natives.

Sea Mar Community Health Centers

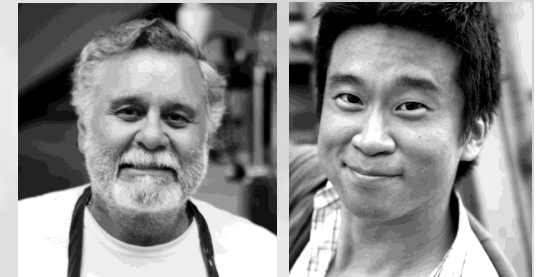
Seattle Clinic..... 206.762.3730

8720 14th Ave S

M-Sa: 8am-5pm. Appointments preferred, Walk-ins okay. Prenatal women seen at anytime.

SEATTLE

Health Services



JUNE 2022

Brochures updated monthly at
www.crisisconnections.org

During the Covid -19 response, **please call ahead to verify** if these agencies have temporarily modified their services and hours.

King County 
2-1-1™
Get Connected. Get Answers.
Crisis Connections · United Way

DENTAL REFERRAL

DENTISTLINK 844.888.5465
www.dentistlink.org
Call M Tu Th F, 9am-5pm; W, 10am-5pm.

DENTAL

International Community Health Services

Holly Park Clinic 206.788.3502

3815 S Othello St

M, Tu, Th-Sa: 7:30am-6pm; W, 8:30am-7pm.

International District Clinic..... 206.788.3757

720 8th Ave S

M-Sa: 7:30am-6pm. Call for appointment.

Neighborcare Health

Sites may focus on serving children under 18 and their parents unless otherwise noted.

45th Street Clinic 206.548.2964

1629 N 45th St

M-F: 8am-4:30pm.

Georgetown Clinic..... 206.461.6943

6200 13th Ave S

M-F: 7:15am-6pm.

High Point Clinic..... 206.461.6966

6020 35th Ave SW

M-F: 6:45am-5:30pm; 1st & 3rd W: 9:30am-5pm.

Rainier Beach Clinic 206.461.6981

9245 Rainier Ave S

M-F: 6:45am-5:30pm; 1st & 3rd W: 9:30am-5pm.

Pacific Tower Clinic..... 206.548.5850

1200 12th Ave S, Suite 401

M-F: 7am-6pm. Serves patients of all ages; Urgent and Non-Urgent care available. No Drop-Ins.

Odessa Brown Children's Clinic .. 206.987.7210

2101 E Yesler Way, Suite 100

M-Th: 8am-5pm. F: 8am-1pm. Comprehensive dental care for Seattle children ages 1-14 years.

Pima Community Dental Clinic.... 206.529.6677

9709 3rd Ave NE

Hours vary by term, Generally M-Th: 8am-5pm & F: 8am-3pm. Dental care at student teaching clinic.

Public Health Centers

Columbia City Dental Clinic 206.535.2497

4400 37th Ave S

M-F: 8:30am-5:30pm. Children ages 1-18; pregnant women.

Belltown Clinic 206.477.8300

2124 4th Ave

M-F: 8am-5pm. Serves only people experiencing homelessness, ages 13+.

North Seattle Clinic.....206.205.8580

12359 Lake City Way NE

M-F: 8am-5pm. Serves children ages 1-18 and pregnant women.

Sea Mar Community Health

South Park Dental Clinic.....206.762.3263

8915 14th Ave S

M-Sa:8am-5pm. Emergency & routine dentalcare

Sea Mar—White Center Clinic...206.965.1005

9650 15th Ave SW Suite 100

M-Sa: 8am-5pm. Emergency and routine dental care for children and adolescents only.

Seattle Indian Health Board.....206.324.9360

611 12th Ave S

M-F: 8:30am-6pm Call for appointment. Serves American Indian and Alaska Natives communities only.

UW—School of Dentistry

Dental Student Clinic.....206.616.6996

1959 NE Pacific St, Room B-307

M-F: 8am-5pm. Dental services provided by students supervised by experienced, licensed dentists.

Urgent Care Clinic.....206.543.5850

1959 NE Pacific St, Room B-307

M-F: 8:30am-12pm; 1:30pm-4:30pm. After hour service is available at UW Medical Center's Emergency Dept.

MOBILE DENTAL

Mobile Dental Van

24 hour recorded message. Free or low cost dental care options for those without insurance.

International Community Health Services -

EYE CARE

Int'l Dist. Vision Clinic..... 206.788.3505

720 8th Ave S, Seattle

M-F: 8am-5pm. Operates a vision clinic for adults and children. Provide complete eye exams and an optical shop.

UpLift Northwest.....206.686.2759

2515 Western Ave

Call to schedule appointment (Voicemail Only). Eye exams and glasses for those with no Medicaid or other insurance coverage. Closed July & August.

OneSight.....888.935.4589

M-F: 8am-5pm Eastern Time

Administers a program to provide free glasses to people in need. Must have a letter verifying financial and eyewear need from a local non-profit and current prescription.

YWCA of Seattle/King County – Snohomish's

Health Access Department.....206.461.4420

19703 68th Ave W, Lynnwood

M-F: 9am-5pm. Provides vouchers for free eye exam, glasses for anyone who is homeless in King County.

NEEDLE EXCHANGE

Capitol Hill Needle Exchange.....206.263.2000

1161 11th Ave, Robert Clewis Center 2

M-Sa: 6:30-8:30pm. Provides new sterile syringes in exchange for used ones. Distributes clean injection supplies and sexual safety items. Provides harm reduction education and vein care consultation.

People's Harm Reduction Alliance

4548 Brooklyn Ave NE,

Visit in person. Su: 1-5pm; M, Tu, Th: 5-7pm;

F: 1-5pm. Provides same day suboxone induction. Distributes clean injection supplies and sexual safety items. Provides harm reduction education and vein care consultation. Overdose prevention training and naloxone.

HEALTH INSURANCE

Health and Dental Insurance.....800.756.5437

401 5th Ave, Suite 1000

Call M-F: 8am -5pm. Provides information and referral to health care providers for low-income adults and children living in King County. Includes for-profit medical and dental clinics that accept Medicaid.

Washington Apple Health provides medical benefits for persons below 138% of the Federal Poverty Level not eligible for Medicare. Call the WA Health Plan Finder at 855.923.4633 or visit www.wahealthplanfinder.org to sign up. Programs listed in this brochure bill Apple Health unless otherwise indicated.