

## FOOD

Food banks may serve specific geographic areas. Call ahead for eligibility requirements.

**Adra P. Berry Food Bank..... 425.222.5573**  
Raging River Community Ch., 31104 SE 86th St, Issaquah. Th: 1-4 pm. Visit in person. Call any day for information.

**Fall City Food Pantry..... 425.269.8098**  
Fall City UMC, 4326 337th Pl SE, Fall City  
1st & 3rd W of month, Noon-1:30pm and 6:30-7:30pm. Visit in person. Proof of address required.

**Hopelink—Bellevue ..... 425.943.7555**  
14812 Main St, Bellevue  
M, 10am-1pm; 4:30pm-7:00pm. Tu: 2pm-7pm;  
W, Th: 9:30am-3pm. Serves Bellevue, Mercer Island & Newcastle residents.

**—Kirkland/Northshore ..... 425.889.7880**  
11011 120th Ave NE, Kirkland  
M, W: 10:00am-4:00pm; Tu Th: 12:00pm-6:30pm;  
F, 1:00pm-4:00pm. Call for more information.

**—Redmond ..... 425.889.7880**  
8990 154th Ave NE, Redmond  
Emergency Food Bags: M Tu, 12:30pm-4:30pm; W, 3:30pm-7:30pm; Th, 10:30am-2:30pm. Serves Redmond & Sammamish areas.

**—Shoreline ..... 206.440.7300**  
17837 Aurora Ave N, Shoreline  
M: 1-4pm, W: 1-7:30pm, Tu, Th: 10am-2pm. Serves residents of Shoreline & Lake Forest Park. ID & Proof of address required. Also serves homeless individuals in area.

**—Sno-Valley ..... 425.889-7880**  
31957 E. Commercial St, Carnation  
Th: 10am-2pm.; 2nd & 4th W: 3-7pm. Visit in person. Call to register. Serves Snoqualmie Valley residents. Limited delivery for homebound adults.

**Issaquah Food and Clothing Bank ... 425.392.4123**  
179 1st Ave SE, Issaquah.  
Hours: Open every other week, Usually M-Th: 1:00pm-7:00pm. Serves residents of the Issaquah School District.

**Mercer Island Youth & Family Services ..... 206.275.7611**  
2040 84th Ave SE, Mercer Island  
M-Th: 10am-5pm. Contact program coordinator for eligibility/enrollment information. Call for appointment.

**Renewal Food Bank ..... 425.736.8132**  
Highland Covenant Church, 15022 Bel-Red Rd, Bellevue, M, 12-3pm; Tu, 4-6:30pm; W, 10am-1pm  
Visit in person once per week. ID Requested.

**Snoqualmie Valley Food Bank.....425.888.7832**  
122 E 3rd St, North Bend  
General Public: W: 9:30am-6:30pm; Seniors M: 9:30am-11:00am; Pet Food: 1st W of month. Resource Center, M Tu, 9:30am-1:30pm; W: 9:30am-6:00pm. COVID-19 changes; Please Call Ahead.

**Woodinville Storehouse.....425.483.5252**  
17110 140th Ave NE, Woodinville  
Tu: 6:30-7:20pm; Sa: 9:30am-10:20am. Visit in person. Offering pre-bagged foods at the door.

## HOT MEALS

**Crossroads Meal Program.....425.452.7300**  
911 164th Ave NE, Bellevue  
M-F: 6:00-7:00pm. Serves Bellevue residents only. Serves Adults and Families with children.

**Issaquah Meals Program.....425.679.0342**  
Issaquah Community Hall, 180 E Sunset Way, Issaquah  
M-F: 5:00-6:00pm. Visit in person. Hot Meals To Go Only. No ID required, no questions asked, no one turned away.

**Open Kitchen Community Meal....425.883.7553**  
16540 NE 80th St, Redmond  
W: 5:00-7:00pm; Provides a free hot meal for anyone in need. Vegetarian options always available.

**POPY's Cafe.....206.569.7011**  
Prince of Peace Luth Ch, 14514 20th Ave NE, Shoreline W: 5:00pm-6:30pm. Visit in person. Serves anyone in need.

**St. Brendan Catholic Church.....425.483.9400**  
10100 NE 192nd St, Bothell  
Meal Th: 5:00pm-6:00pm. Provides a weekly free hot meal to anyone in need. Emergency food bags offered at Parish Office M-F: 8:30am-4:30pm.

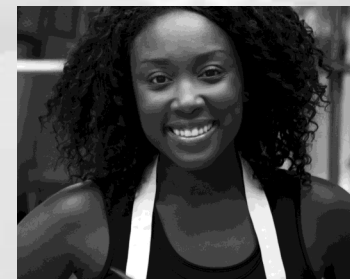
**Sophia Way Women's Day Center....425.896.7385**  
3032 Bellevue Way NE, Bellevue  
Offers Breakfast/Lunch, Daily:  
Breakfast: 6:00AM-10AM. Lunch: 11:30AM-1:00PM  
Serves women, with or w/o children.

**Vedic Cultural Center ..... 206-979-8002**  
1420 228th Ave SE, Sammamish, WA  
Meal Daily: 7:30PM -9:00PM

**Vedic Food Truck: Redmond Bus Stop Parking**  
Lot 9451 Avondale Road Northeast Redmond WA  
Th, 6:30pm-8:30pm. Location is adjacent to bus stop in parking lot.

## EAST & NORTH KING COUNTY

# Emergency Services



**OCTOBER 2022**

Brochures updated monthly at  
[www.crisisconnections.org](http://www.crisisconnections.org)

During the Covid -19 response, please call ahead to verify if these agencies have temporarily modified their services and hours.

King County   
**2-1-1**<sup>TM</sup>  
Get Connected. Get Answers.  
Crisis Connections · United Way

## DENTAL CARE

**HealthPoint —Bothell**..... 425.424.6350  
10414 Beardslee Blvd, Suite #201  
M-F: 7:30AM-5:30PM; Drop in hours: W: 7:30AM-5:30PM. Sa: 8:30AM-12:30PM.

—**Redmond**.....425.883-8000  
Together Center, 16225 NE 87th Street, Suite B-6  
M-F: 7:30AM-4:00PM; Sa: Call for information.

### International Community Health Services

—**Bellevue**..... 425.373.3000  
1050 140th Ave NE.  
M-Sa: 7:30AM-6:00PM.

—**Shoreline** .....206.533.2600  
16549 Aurora Ave North  
M-Sa: 7:30AM-6:00PM.

### Lake Washington Institute of Technology

—**Dental Clinic**..... 425.739.8130  
11605 132nd Ave NE, East Bldg., Room E103, Kirkland  
M-Th: 8:00AM-4:30PM; F: Please call.

**Mobile Dental Van** ..... 425.284.1950  
24hr voicemail. [www.medicalteams.org/mobiledental](http://www.medicalteams.org/mobiledental). Offers mobile dental care options for residents in King, Pierce and Snohomish Counties who do not have dental insurance. Does not provide crowns, dentures, root canals and teeth cleaning. Visit website for a list of clinics.

**Public Health Dental Clinic** ..... 206.477.8000  
Eastgate Health Center, 14350 SE Eastgate Way, Bellevue M, Tu, Th, F: 8am-5pm; W: hours vary by week. Provides general dental care services for children ages 1-18; also low-income pregnant women and adult who are Medicaid Eligible.

## MEDICAL CARE

**Sea Mar Dental Clinic**..... 425.998.5980  
3801 150th Ave SE, Bellevue  
M-Sa: 8:00AM- 5:00PM Offers Primary Dental Care on a sliding scale. Call or drop-in; appointments preferred.

### Evergreen Health

—**Kirkland** ..... 425.899.6700  
12333 NE 130th Ln, Suite 310, Kirkland  
M-F: 8am-5pm. Sa: 8am-Noon.

—**Redmond**..... 425.899.2273  
8980 161st Ave NE, Redmond  
M-Th: 7am-7pm; F: 7am-6pm; Sa: 8am-4pm.

—**Sammamish**..... 425.898.0305  
22850 NE 8th St, Suite 103, Sammamish  
M: 7am-7pm, T, W, F: 7am-5pm, Th: 8am-5pm; Sa: 8:30am-12:30pm.

—**Woodinville** ..... 425.481.6363  
16916 140th Ave NE, Suite 101, Woodinville  
M-F: 8am-5pm. Sa: 9am-Noon.

### HealthPoint

—**Bothell**..... 425.486.0658  
10414 Beardslee Blvd, Suite 201  
M-W: 8am-8pm; Th, F: 8am-5pm; Sa: 10am-3pm.

—**Redmond**..... 425.882.1697  
Together Center, 16225 NE 87th St, Suite B-6  
M, Tu: 8am-8pm; W-F: 8am-5pm.

### Overlake Medical Clinics

—**Bellevue Primary Care** ..... 425.635.6350  
Washington Federal Bldg., 400 108th Ave NE, Suite 100 M-F: 7am-6pm; Offers same-day appointments.

—**Redmond Primary Care** ..... 425.635.6430  
16315 NE 74th St, Redmond M-F: 7am-5pm.

**Public Health - Eastgate**..... 206.477.8000  
14350 SE Eastgate Way, Bellevue  
M, Tu, Th, F: 8am-5pm; W: hours vary by week. Call for appointment.

**RotaCare Free Health Care Clinic**..... 425.828.4304  
Hopelink, 14812 Main St, Bellevue  
Sa: 9:30-11:30am. Free visit in person clinic for the uninsured.

**Sea Mar-Bellevue Medical Clinic** ..... 425.460.7140  
3801 150th Ave SE, Bellevue M-Sa: 8am-5pm. Call for appointment or Visit in person.

**Snoqualmie Ridge Medical Clinic** ..... 425.396.7682  
35020 SE Kinsey St, Snoqualmie  
M-F: 8am-6pm.; Sa: 9am-noon.

**Snoqualmie Tribal Health Clinic** ..... 425.888.5511  
9575 Ethan Wade Way SE, North Snoqualmie  
M-F: 8:30am-4:30pm. Call or visit in person. Serves Snoqualmie Valley residents & Snoqualmie Tribal members.

**Snoqualmie Valley Hospital Clinic**.....425.831.2333  
9801 Frontier Ave SE, Snoqualmie  
M, Tu, Th: 8am-4:30pm; F: 8am-noon. Call or Visit in person.

**Swedish Primary Care** ..... 425.394.0700  
751 NE Blakely Dr. 5th Floor, Issaquah  
M-F: 8:00AM-5:00PM. Will also connect patients to Swedish network of hospitals and specialist for additional care.

**Swedish Outpatient Clinic**..... 425.888.2016  
37624 SE Fury St., Suite #101, Snoqualmie  
M-F: 8:00AM-6:00 PM; Sa: 8:00AM-12:00PM  
Call for an appointment.

**VA Outpatient Clinic**.....800-329-8387  
13033 Bel-Red Rd, Suite #210, Bellevue  
M-F: 8:00AM-4:30PM. Call for appt. Serves Veterans enrolled in VA Puget Sound Healthcare System.

**Hopelink-Sno-Valley** .....425.333.4163  
31957 E. Commercial St, Carnation  
2nd and 4th W: 3-7pm; Every Th: 10am-2pm.  
Serves area residents who are food pantry clients.

**Congregations for the Homeless**.....425.289.4044

## DROP-IN CENTERS

515 116th Avenue Northeast Suite 150 Bellevue  
Daily, 8am-8pm. Provides a place for homeless men to relax. Provides three meals per day. Additionally offers case management, computer access, clothing, hygiene items and temporary mail service as available. Serves men ages 18 and older; no children.

**Friends of Youth** .....425.298.4846  
Together Center, 16625 NE 87th St, Ste A-1, Redmond, M,Tu: 9am-3pm, W by appointment only, Th, F: 9am-1pm, Sa, Su: 11am-5pm. Serves youth, ages 15-22, who are homeless or at risk of homeless. Provides resources, basic needs, a link to case managers and other wraparound services.

**Lake City Partners-God's Li'l Acre Day Center.**  
.....206.497.0838  
12521 33rd Avenue NE, Seattle,  
Offers a small neighborhood day center for those in need. Serves include: laundry and shower facility, storage of belongings and access to resources.

**Sophia Way Women's Day Center** .....425.896.7385  
St. Luke's Lutheran Ch, 3032 Bellevue Way NE, Bellevue. Daily: 8am-3pm.  
Daytime drop-in center (in the rear of the church) for low-income & homeless women and women with children. Offers snacks, showers, laundry facilities, computers, Internet & phones.

**Call Ahead First!**