

MEDICAL

Country Doctor Community Health Centers

After-Hours Clinic.....206.709.7199

2101 E Yesler Way, Suite #150, Seattle

M-F: 6:00pm-9:00pm; Sa Su: 11:00am-5:00pm.

After-hours care for acute conditions with a sliding fee scale based on income.

Carolyn Downs Center 206.299.1900

2101 E Yesler Way, Suite #150, Seattle

M, Th, F: 9:00am-5:00pm, Tu, W: 9:00am-8:30pm,
Call for appointment. Serves adults & children.

Community Clinic 206.299.1600

500 19th Ave E, Seattle

M, Th, F: 9:00am-5:00pm; Tu W: 9:00am-8:30pm.

Call for appointment. Serves adults & children.

Harborview Medical Center 206.520.5000

Adult Medicine Clinic

325 9th Ave, Seattle

M-F: 8:30am-5:00pm.

Provides Outpatient Medical and Surgical Services

International Medicine Clinic.... 206.520.5000

325 9th Ave, Ground Floor, West Clinic, Seattle

M-W, F: 8:00am-4:30pm; Th: 8:00am-8:00pm.

Comprehensive healthcare services for refugees & immigrants, age 16 or older. Interpreter are available onsite.

Pioneer Square Medical Clinic.. 206.744.1500

206 3rd Ave South, Seattle

Tu, Th, F: 8:05am-4pm; W: 9:00am-4:00pm. Closed on Monday.

Third Avenue Center 206.521.1231

2028 3rd Ave, Seattle

M, Tu, Th, F: 8:00am-4:00pm. First appt. at 8:05am,
W: 8:00am-4:00pm. First appt. 9:15am.

International Community Health Services

Holly Park Clinic 206.788.3500

3815 S Othello St, Seattle

M, Tu, Th-Sa: 7:30am-6:00pm; W: 8:30am-7:00pm

International District Clinic..... 206.788.3700

720 8th Ave South, Seattle

M, Tu, F: 7:30am-6:00pm; W, Th: 7:30am-7pm,

Sa: 8:30am-5:00pm

Neighborcare Health's

45th Street Clinic 206.633.3350

1629 N 45th St, Seattle

M-F, 8:00am-5:00pm; W: 1st&3rd 9:30am-5:00pm.

Homeless Youth Clinic: W, Th: 6-9pm, for youth ages 12-26.

Ballard Homeless Medical Clinic 206.782.5939

Nyer Urness House, 1753 NW 56th St, Ste 200

M-Th 9:00am-4:30pm, F: 1:00pm-4:30pm-Phone Appts

Serves: Homeless, Veterans and those without safe, stable and secure housing in the Ballard.

Columbia City Clinic 206.461.6957

4400 37th Ave S, Seattle

M-F: 8:00am-5:00pm; Sa: 9:30am-1:30pm, W:

9:30am-5:00pm-1st & 3rd. Same Day Appts; Call.

High Point Clinic..... 206.461.6950

6020 35th Ave SW, Seattle

M-F: 8:00am-5:00pm

Lake City Clinic..... 206.417.0326

12721 30th Ave NE, Suite #101, Seattle

M-F: 8am-5pm

Meridian Clinic 206.296.4990

10521 Meridian Ave N, Suite A, Seattle

M-F: 8:00am-5:00pm; W: 9:30am-5:00pm-1st&3rd.

Pike Market Clinic 206.728.4143

1930 Post Alley, Seattle

M, Tu, Th: 8:00am-5:00pm; W: 9:30am-5:00pm;

F: 8:00am-4:00pm. Serves: Adults Only

Rainier Beach Clinic..... 206.722.8444

9245 Rainier Ave S, Seattle

M, Tu, Th: 7:30am-7:30pm; W: 7:30am-6:00pm; F:

7:30am-5:30pm; Sa: 9:30am-1:30pm. Opens at

9:30am 1st & 3rd W.

St. Vincent de Paul Aurora Clinic... 206.548.7600

13555 Aurora Ave N, Seattle

W: 9:00am-4:30pm; F: 10:00am-3:30pm.

Public Health

Belltown Health Center..... 206.477.8222

2124 4th Ave, Seattle

M-F: 8:00am-5:00pm.

Lahai Health—Haller Lake ... 206.363.4105 x230

2152 N 122nd St

M: 4:00pm-8:00pm; W: 5:00pm-9:00pm; F: 9:00am-

1:00pm; Call for appt. \$10 donation requested. How-

ever, no one will be turned away if unable to pay.

Sea Mar Community Health Centers

Seattle Clinic..... 206.762.3730

8720 14th Ave S, Seattle

M-Sa: 8:00am-5:00pm. Appointments preferred,

Walk-in's okay. Prenatal: Women seen at anytime.

White Center Clinic..... 206.965.1000

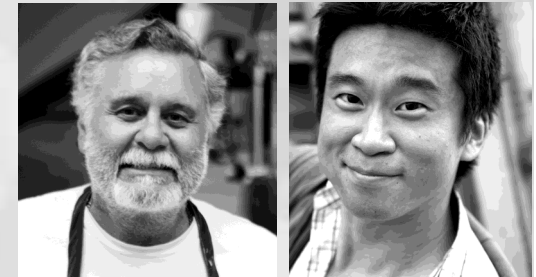
9650 15th Ave SW, Suite #100, Seattle

M-Sa: 8:00am-5:00pm. Primary Healthcare for

individuals and families. Appointments preferred,
Walk-in's okay.

SEATTLE

Health Services



OCTOBER 2022

Brochures updated monthly at
www.crisisconnections.org

During the Covid -19 response, **please call ahead to verify** if these agencies have temporarily modified their services and hours.

King County 
2-1-1TM
Get Connected. Get Answers.
Crisis Connections · United Way

DENTAL REFERRAL

DENTISTLINK 844.888.5465
www.dentistlink.org
Call M Tu Th F, 9am-5pm; W, 10am-5pm.

DENTAL

International Community Health Services

Holly Park Clinic 206.788.3502

3815 S Othello St

M-F: 8:00am-6:00pm; 2nd Sa: 8:00am-6:00pm.

International District Clinic..... 206.788.3757

720 8th Ave S

M-F: 8:00am-6:00pm. 1st Sa: 8:00am -6:00pm

Neighborcare Health

Sites may focus on serving children under 18 and their parents unless otherwise noted.

45th Street Clinic 206.548.2964

1629 N 45th St

M-F: 8:00am-4:30pm.

Georgetown Clinic..... 206.461.6943

6200 13th Ave S

M-F: 7:15am-6:00pm.

High Point Clinic..... 206.461.6966

6020 35th Ave SW

M-F: 6:45am-5:30pm; 1st&3rd W: 9:30am-5:00pm.

Rainier Beach Clinic 206.461.6981

9245 Rainier Ave S

M-F: 6:45am-5:30pm; 1st&3rd W: 9:30am-5:00pm.

Pacific Tower Clinic..... 206.548.5850

1200 12th Ave S, Suite 401

M-F: 7:00am-6:00pm. All patients screened for COVID. Urgent and Non-Urgent Care. No Drop-Ins.

Odessa Brown Children's Clinic .. 206.987.7210

2101 E Yesler Way, Suite 100

M-Th: 8:00am-5:00pm. F: 8:00am-3:00pm. Seattle Children ages 1-14 years(Comprehensive Dental)

Pima Community Dental Clinic.... 206.529.6677

9709 3rd Ave NE

Hours vary per semester, M-Th: 8:00am-5:00pm

F: 8:00am-3:00pm at a Student Teaching Facility.

Public Health Centers

Columbia City Dental Clinic 206.535.2497

4400 37th Ave S

M-F: 8:30am-5:30pm. Children 1-18; low-income pregnant women and adults if Medicaid eligible.

Belltown Clinic 206.477.8300

2124 4th Ave

M-F: 8:00am-5:00pm. Services: For people experiencing homelessness, ages 13 and older.

North Seattle Clinic.....206.205.8580

12359 Lake City Way NE

M-F: 8:00am-5:00pm. Children 1-18; low-income pregnant women and adults if Medicaid eligible

Sea Mar Community Health

South Park Dental Clinic.....206.762.3263

8915 14th Ave S

M-Sa: 8:00am-5:00pm. Primary and Emergency dental care, including exams, extractions, fillings, root canals and x-rays.

Sea Mar—White Center Clinic...206.965.1005

9650 15th Ave SW Suite 100

M-Sa: 8:00am-5:00pm. Primary and Emergency dental care for children and adolescents only.

Seattle Indian Health Board.....206.324.9360

611 12th Ave S

M-F: 8:30am-6:00pm. Call for an appointment. Serves American Indian and Alaska Natives only.

UW—School of Dentistry

Dental Student Clinic.....206.616.6996

1959 NE Pacific St, Room B-307

M-F: 8:00am-5:00pm. Dental services performed by students under the direct supervision of experienced, dentists who are faculty of the School.

Urgent Care Clinic.....206.543.5850

1959 NE Pacific St, Room B-307

M-F: 8:30am-12:00pm; 1:30pm-4:30pm. After hour service is available at UW Medical Center's Emergency Dept.

MOBILE DENTAL

Mobile Dental Van.....medicalteams.org

Mobile Dental Clinic Schedule is online. Curbside screening for COVID before entry. Free or low cost dental care for low-income adults and children.

EYE CARE

International Community Health Services

Int'l Dist. Vision Clinic.....206.788.3505

720 8th Ave S, Seattle

M, Tu, Th: 9:00am-5:00pm; W: 9:00am-1:00pm.

Operates a vision clinic for adults and children. Provides complete eye exam and an optical shop.

UpLift Northwest.....206.686.2759

2515 Western Ave

Call to schedule appointment (Voicemail Only). Eye exams and glasses for those with no insurance or Medicaid that covers eyecare. Program: Run by volunteer opticians and optometrists.

OneSight.....888.935.4589

M-F: 5:00am-2:00pm

Administers a program to provide free glasses to people in need. Must have a letter verifying financial and eyewear need from a local non-profit and a current prescription to Lens Crafter, Pearle Vision, Sears Optical or Target Optical.

YWCA of Seattle/King County – Snohomish's

Health Access Department.....206.461.4420

19703 68th Ave W, Lynnwood

M-F: 9am-5pm. Provides free eye exams, & glasses to those homeless in King County.

NEEDLE EXCHANGE

Capitol Hill Needle Exchange.....206.263.2000

1161 11th Ave, Robert Clewis Center 2

M-Sa: 6:30pm-8:30pm. Provides new sterile syringes in exchange for used ones. Distributes clean injection supplies and sexual safety items. Provides harm reduction education and vein care consultation.

People's Harm Reduction Alliance

4548 Brooklyn Ave NE,

Visit in person. Su: 1-5pm; M, Tu, Th: 5-7pm;

F: 1-5pm. Provides same day suboxone induction. Distributes clean injection supplies and sexual safety items. Provides harm reduction education and vein care consultation. Overdose prevention training and naloxone.

HEALTH INSURANCE

Health and Dental Insurance.....800.756.5437

401 5th Ave, Suite 1000, Seattle

Call M-F: 8:00am-6:00pm. Provides information and referral to health care providers for low-income adults and children living in King County. Includes for-profit medical and dental clinics that accept Medicaid.

Washington Apple Health provides medical benefits for persons below 138% of the Federal Poverty Level not eligible for Medicare. Call the WA Health Plan Finder at 855.923.4633 or visit www.wahealthplanfinder.org to sign up. Programs listed in this brochure bill Apple Health unless otherwise indicated.