

## FOOD

Food banks may serve specific geographic areas.  
Call ahead for eligibility requirements.

**Adra P. Berry Food Bank**..... 425.222.5573  
31104 SE 86th St, Issaquah.  
Th: 1pm-3pm.  
Visit in person. Call any day for information.

**Fall City Food Pantry**..... 425.269.8098  
4326 337th Pl SE, Fall City  
1st & 3rd W of month: 12pm-1:30pm, 6:30pm-7:30pm.  
Visit in person. Proof of address required.

## Hopelink

—**Bellevue**..... 425.943.7555  
14812 Main St, Bellevue  
M, Th: 1pm-4pm, 5pm-7pm; T, W: 10am-2pm.  
Serves Bellevue, Mercer Island, and Newcastle residents.

—**Kirkland/Northshore**..... 425.889.7880  
11011 120th Ave NE, Kirkland  
M: 1pm-4pm. T, Th: 1pm-4pm, 5pm-7pm.  
W: 10am-3pm.  
Operates a food pantry for Kirkland, Kenmore, Bothell, and Woodinville area residents. Call for more information.

—**Redmond**..... 425.889.7880  
8990 154th Ave NE, Redmond  
M, W: 1pm-4pm, T: 10am-3pm, Th: 10am-12pm.  
Serves Redmond and Sammamish areas.

—**Shoreline**..... 206.440.7300  
17837 Aurora Ave N, Shoreline  
T: 10am-3pm, W: 1pm-4pm, 5pm-7pm. Th: 1pm-4pm.  
Serves residents of Shoreline & Lake Forest Park.  
ID and Proof of address required. Also serves homeless individuals in area.

—**Sno-Valley**..... 425.889-7880  
31957 E. Commercial St, Carnation  
M: 4pm-6pm, W: 3pm-5pm, Th: 10am-12pm.  
Visit in person. Call to register. Serves Snoqualmie Valley residents. Limited delivery for homebound adults.

**Issaquah Food and Clothing Bank**..... 425.392.4123  
179 1st Ave SE, Issaquah.  
Open every other week, **usually** M-Th: 1pm-7pm.  
Serves residents of the Issaquah School District.

**Mercer Island Youth & Family Services**.....  
..... 206.275.7611  
2040 84th Ave SE, Mercer Island  
T: 3pm-6pm, W: 9am-12pm.  
Contact program coordinator for eligibility and enrollment information. No Drop-In Service; Call for appointment.

**Renewal Food Bank**..... 425.736.8132  
15022 Bel-Red Rd, Bellevue  
M: 12pm-3pm; Tu: 4pm-6:30pm; W: 10am-1pm.  
Visit in person once per week. ID Requested.

**Snoqualmie Valley Food Bank**..... 425.888.7832  
122 E 3rd St, North Bend  
Seniors only: M: 10am-11:30am.  
General Public: M: 11:30am-12:45pm.  
Tu: 3pm-6:15pm. W: 9:30am-4:15pm.  
Pet food distributed on 1st W, and Sundries on the 2nd W of month. Please Call Ahead.

**Woodinville Storehouse**..... 206.595.6419  
17110 140th Ave NE, Woodinville  
Tu: 6:30pm-7:15pm; Sa: 9am-10:20am.  
Visit in person. Offering pre-bagged foods at the door.

## HOT MEALS

**Crossroads Meal Program**..... 425.452.7300  
911 164th Ave NE, Bellevue  
M-F: 6pm-7pm.  
Provides hot meals for anyone in need.

**Issaquah Meals Program**..... 425.679.0342  
Issaquah Community Hall, 180 E Sunset Way, Issaquah  
M-F: 5pm-6pm. Visit in person.  
Dine In or Take Out options. No ID required.

**Open Kitchen Community Meal**.... 425.883.7553  
16540 NE 80th St, Redmond  
W: 5pm-7pm.  
Provides a free hot meal for anyone in need.

**POPY's Café**..... 206.569.7011  
14514 20th Ave NE, Shoreline  
W: 5pm-6:30pm.  
Visit in person. Serves anyone in need.

**St. Brendan Catholic Church**..... 425.483.9400  
10100 NE 192nd St, Bothell  
Th: 5pm-6pm.  
Provides a free hot meal to anyone in need once a week.

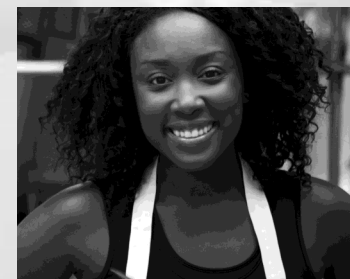
**Sophia Way Women's Day Center**.... 425.896.7385  
3032 Bellevue Way NE, Bellevue  
Breakfast: 6am-10am. Lunch: 11:30am-1pm.  
Offers breakfast and lunch daily. Serves women, with or without children.

**Vedic Cultural Center**..... 206-979-8002  
1420 228th Ave SE, Sammamish, WA  
Meal Daily: 7:30pm-9pm.  
Provides a free vegetarian hot meal for anyone in need.

**Vedic Food Truck: Redmond Bus Stop Parking Lot**  
9451 Avondale Road Northeast Redmond WA  
Th, 6:30pm-8:30pm.  
Location is adjacent to bus stop in parking lot.

## EAST & NORTH KING COUNTY

# Emergency Services



4th Quarter 2023

Brochures updated quarterly at  
[www.crisisconnections.org](http://www.crisisconnections.org)

During the Covid -19 response, **please call ahead** to verify if these agencies have temporarily modified their services and hours.



## FOOD BENEFITS

**King County 211 Basic Food** ..... Dial 211  
M-F: 9am-5pm.  
*Offers screening and application appointments with a Basic Food Specialist. Call for more information.*

**Within Reach**..... 888.436.6392  
M-Th: 8am-5:30pm; F: 8am-5pm.  
*Offers a toll-free phone line with screening and application assistance for Basic Food and WIC nutrition programs.*

## DENTAL CARE

### HealthPoint

—**Bothell**.....425-424-6350  
10414 Beardslee Blvd, Suite #201  
M-F: 7:30am-5:30pm; Sa: 8:30am-12:30pm.

—**Redmond** .....425.883-8000  
16225 NE 87th Street Suite 150, Bldg. A-Forest  
M-F: 7:30am-4pm; Every other Sa: 8am-12pm.

### International Community Health Services

—**Bellevue**.....425.373.3030  
1050 140th Ave NE.  
M-F: 8am-6pm; 4th Sa of the month: 8am-6pm.

—**Shoreline**.....206.533.2660  
16549 Aurora Ave North  
M-F: 8am-6pm; 3rd Sa: 8am-6pm.

**Lake Washington Institute of Technology Dental Clinic**.....425.739.8130  
11605 132nd Ave NE, East Bldg, Room E103, Kirkland  
*Call for hours.*

**Mobile Dental Van** .....  
[www.medicalteams.org/mobiledental](http://www.medicalteams.org/mobiledental)  
*Offers mobile dental care options for residents in King, Pierce, and Snohomish Counties who do not have dental insurance. Does not provide crowns, dentures, root canals and teeth cleaning. Visit website for a list of clinics.*

**Public Health Dental Clinic** ..... 206.477.8000  
Eastgate Health Center, 14350 SE Eastgate Way, Bellevue  
M-F: 8am-5pm.  
*Provides general dental care services for children ages 1-18; also low-income pregnant women and adults who are Medicaid Eligible.*

**Sea Mar Dental Clinic**.....425.998.5980  
3801 150th Ave SE, Bellevue  
M-F: 8am-5pm.  
*Offers dental care on a sliding scale. Call for appointment.*

## MEDICAL CARE

### EvergreenHealth

—**Kirkland** .....425.899.6700  
12333 NE 130th Ln, Suite 310, Kirkland  
M-F: 8am-5pm; Sa: 8am-12pm.

—**Redmond** .....425.899.2273  
8980 161st Ave NE, Redmond  
M-Th: 7am-7pm; F: 7am-6pm; Sa: 8am-4pm.

—**Sammamish**.....425.898.0305  
22850 NE 8th St, Suite 103, Sammamish  
M: 7am-7pm; T, W, F: 7am-5pm; Th: 8am-5pm;  
Sa: 8:30am-12:30pm.

—**Woodinville** .....425.481.6363  
16916 140th Ave NE, Suite 101, Woodinville  
M-F: 8am-5pm; Sa: 9am-12pm.

### HealthPoint

—**Bothell**.....425.486.0658  
10414 Beardslee Blvd, Suite 201  
M-W: 8am-8pm; Th, F: 8am-5pm; Sa: 10am-3pm.

—**Redmond**.....425.882.1697  
16225 NE 87th St, Suite 150, Bldg. A-Forest, Redmond  
M, Tu: 8am-8pm; W-F: 8am-5pm.

### Overlake Medical Clinics

—**Bellevue Primary Care**.....425.635.6350  
400 108th Ave NE, Suite 100  
M-F: 7am-6pm.  
*Offers same-day and next-day appointments.*

—**Redmond Primary Care**.....425.635.6430  
16315 NE 74th St, Redmond  
M-F: 7am-5pm.

**Public Health - Eastgate**.....206.477.8000  
14350 SE Eastgate Way, Bellevue  
M, Tu, Th, F: 8am-5pm; W: hours vary by week.  
*Call for appointment.*

**Sea Mar-Bellevue Medical Clinic**...425.460.7140  
3801 150th Ave SE, Bellevue  
M-Sa: 8am-5pm.  
*Call for appointment or Visit in person.*

**Snoqualmie Ridge Medical Clinic**....425.831.2313  
35020 SE Kinsey St, Snoqualmie  
M-F: 8am-6pm.

**Snoqualmie Valley Hospital Clinic**..425.831.2333  
9801 Frontier Ave SE, Snoqualmie  
M-F: 8am-6pm.

**Swedish Outpatient Clinic**.....425.888.2016  
37624 SE Fury St., Suite #101, Snoqualmie  
M-F: 8am-6pm; Sa: 8am-12pm.  
*Call for an appointment.*

**Swedish Primary Care**.....425.394.0700  
751 NE Blakely Dr. 5th Floor, Issaquah  
M-F: 8am-5pm.  
*Will also connect patients to Swedish network of hospitals and specialist for additional care.*

**VA Outpatient Clinic**.....800.329.8387  
13033 Bel-Red Rd, Suite #210, Bellevue  
M-F: 8am-4:30pm. *Call for appt.*  
*Serves Veterans enrolled in VA Puget Sound Healthcare System.*

## DROP-IN CENTERS

**Congregations for the Homeless**....425.289.4044  
13668 Southeast Eastgate Way, Bellevue  
*Daily, 5am-11pm.*

*Provides a place for homeless men to relax. Provides three meals per day. Additionally offers case management, computer access, clothing, hygiene items, and temporary mail service as available. Serves men ages 18 and older; no children.*

**Friends of Youth**.....425.298.4846  
16625 NE 87th St Ste A-1, Redmond  
M, Tu: 9am-3pm, Th-F: 9am-1pm, Sa-Su: 11am-5pm.  
*W by appointment only.*

*Serves youth, ages 15-22, who are homeless or at risk of homelessness. Provides resources, basic needs, a link to case managers, and other wraparound services.*

**God's Li'l Acre Day Center**.....206.497.0838  
12521 33rd Avenue NE, Seattle.  
M-F: 9am-12pm, 1pm-4pm.  
*Offers a small neighborhood day center for those in need. Services include: laundry and shower facility, storage of belongings, and access to resources.*

**New Bethlehem Project**.....425.315.3873  
8045 120th Avenue Northeast Suite #100, Kirkland  
M-F: 10am-2pm.  
*Day center for homeless families that offers shower and laundry facilities, hot meals, and access to computers. Case management offered as well. No single adults.*

**Sophia Way Women's Day Center**..425.896.7385  
3032 Bellevue Way NE, Bellevue.  
*Daily: 8am-3pm.*  
*Daytime drop-in center (in the rear of the church) for low-income and homeless women with or without children. Offers snacks, showers, laundry facilities, computer access with internet, and phones.*