

DROP-IN CENTERS

Catholic Comm. Services 253-893-7895

33505 13th Place S, Suite D, Federal Way
All Ages: M-F: 10am-3pm.
Families with children: Tu, Th: 4pm-7pm.
Provides showers, laundry, computers,
mail service, phones, and other services.

Ray of Hope Resource Center 253-833-8925

2806 Auburn Way North, Auburn
M-Sa: 8:30am-8pm. Su: 2pm-8:30pm.
Serves families and individuals. Offers laundry
and shower facility on select days, and offers
breakfast, lunch, and dinner. Please call ahead.

HOT MEALS

Auburn Food Bank 253-833-8925

100 N Street SE, Auburn
Meals: M: 4:30pm-5pm.
Provides a free to-go dinner to anyone in
need.

Calvary Chapel South 253-852-7030

1340 West Smith Street, Kent
Meal: 4th Sa of Month: 11am-1pm.
Provides a hot meal once a month to anyone
in need. Also offers clothing and hygiene kits.

Comm. Caregiving Network 253-661-0505

Serves hot meals to anyone in need.

—Christian Faith Center

33645 20th Ave S, Federal Way
Meal: M: 5pm-6pm.

—Church of the Good Shepherd

345 S 312th Street, Federal Way
Meal: Sa: 1pm-2pm.

Hungry Soul Café 253-852-1044

3807 Reith Rd S, Kent
Meal: W: 4:30pm-5:30pm.
Serves a free nutritious dinner once per week
to anyone in need.

Kent Community Supper 253-852-2057

Kent Lutheran Church
336 2nd Ave S, Kent
Contact: Tu-F: 10am-2pm. Meal: M: 5pm-6pm.
Serves a free hot dinner once a week. Snack
bags may be available during office hours.

Neighbor to Neighbor 253-852-3883

Kent Seventh Day Adventist Church
25213 116th Ave SE, Kent
Sa: 2pm-3pm.
Provides a sack lunch to anyone in need.

Pacific/Algona Comm. Center 253-929-1150

100 3rd Ave SE, Pacific
Office: M-F 8:30am-4:30pm.
General Public: M: 11am-12:30pm.
Seniors Nutrition Lunch: Tu-F: 12pm.
Offers a lunch for seniors, and a separate
lunch for the general community.

Renton Community Supper 425-255-5974

720 S Tobin Street, Renton
Meal: M-Th: 4pm-5pm.
Provides a hot meal four days a week.
Available to anyone in need.

CLOTHING

Help Northwest 206-227-5977

404 22nd St SE #D, Auburn
Office Hours: M-F: 1pm-3pm.
Provides clothing, coats and blankets to
residents in the Auburn Valley area
experiencing homelessness.

Plateau Outreach Ministries 360-825-8961 x3

1806 Cole St., Enumclaw
W: 9am-12pm.
Provides clothing for residents of Enumclaw
and the greater Plateau area.
Clients may visit weekly.

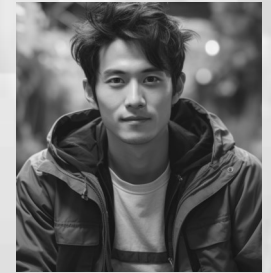
Transform Burien 206-839-6620

15623 Des Moines Memorial Dr. South, Burien
W: 12pm-2pm; Su: 3pm-5pm.
Serves anyone in need, with no geographic
restrictions. Offers clothing and toiletries.

Call Ahead First!

SOUTH KING COUNTY

Emergency Services



1st Quarter 2024

Brochures updated quarterly at
www.crisisconnections.org

Due to Covid-19, services may
temporarily modify their programs.

Please call ahead to verify.

211 king county

A SERVICE OF CRISIS CONNECTIONS

FOOD BANKS

Food banks may serve specific geographic areas.
Call ahead for eligibility requirements.

Auburn Food Bank 253-833-8925

930 18th Pl NE, Auburn
M, Tu, Th, F: 9am-1pm.
2nd W: 4:30pm-5:30pm.
Serves Auburn School District residents.

Black Diamond Comm. Center 360-886-1011

31605 3rd Ave, Black Diamond
M-Th: 9am-4pm. Serves residents of Black Diamond, Covington, Maple Valley, and Ravensdale.

Des Moines Food Bank 206-878-2660

United Methodist Church, 22225 9th Ave S, Des Moines
M, W, F: 9am-11:45am; 3rd Tu: 6pm-8pm.
Online order pickup: Tu: 1pm-3pm, by appointment.
Serves Des Moines and parts of Kent, Normandy Park, and SeaTac. Call ahead.

Enumclaw Kiwanis 253-239-7501

1350 Cole St, Enumclaw
M-W, 9am-11:45am.
Serves Enumclaw School District residents. May visit once per month. Curbside service only.

Highline Area Food Bank 206-433-9900

18300 4th Ave S, Burien
Tu: 12pm-2:30pm; Th: 10am-12:30pm;
2nd Tu: 5:30pm-7pm.
Serves Highland area residents. May visit weekly.

Kent Food Bank

—Kent Alliance Center 253-520-3550

515 W Harrison St, Ste. 107, Kent
General: W, F: 10am-1pm.
Seniors 55+: Th 10am-11am.
Serves Kent School District residents; clients may visit twice per month.

—Birch Creek Annex 253-520-3550

12961 SE 275th St, Kent
M: 10am-1pm.
Provides food for Kent School District residents.

Maple Valley Food Bank 425-432-8633

21415 Renton-Maple Valley Rd, Maple Valley
Tu: 10:30am-6pm. W: 10:30am-1pm.
Serves residents of Maple Valley, Black Diamond, and Tahoma School District.
Limited home delivery.

Margie Williams Helping Hands 425-255-1446

4519 NE 10th St, Renton
Sa: 8am-10:30am.
Serves anyone in need.

Muckleshoot Family Resource 253-876-3336

39015 172nd Ave SE, Auburn
M-F: 9am-4pm.
Muckleshoot Tribal members only.
Home Delivery for Elders and disabled adults.

Multi-Service Center 253-838-6810

1200 S 336th St, Federal Way
M, W, F: 10am-2pm; closed on holidays.
Operates food pantry for Federal Way School District residents. No-cook food bags available for homeless clients.

Plateau Outreach Ministries 360-825-8961 x3

1806 Cole St, Enumclaw
Pantry: W: 9am-12pm.
Emergency Food: M-Sa: 10am-3pm.
Serves residents of the Enumclaw area.

Salvation Army - Renton 425-255-5969

206 S Tobin St, Renton
M, Tu, Th, F: 9am-11:15am, 1pm-3:15pm.
Serves Renton, Mercer Island, and Skyway.

Tukwila Pantry 206-431-8293

3118 S 140th St, Riverton Park UMC, Tukwila
Tu, Th, Sa: 10am-2pm.
Serves Boulevard Park, Burien, SeaTac, and Tukwila residents.

MEDICAL CARE

HealthPoint

Low cost medical & pharmacy services.

—Auburn 253-735-0166

126 Auburn Ave, Suite 300, Auburn
M-W: 8am-8pm; Th F: 8am-5pm;
Sa: 10am-3pm.

—Federal Way 253-874-7634

33431 13th Pl S, Federal Way
M, W, Th, F: 8am-5pm; Tu: 8am-7pm.

—Kent 253-852-2866

403 E Meeker St, Suite 200, Kent
M-W: 8am-8pm; Th F: 8am-5pm.

—Renton 425-226-5536

200 S 2nd St, Renton
M, Tu: 8am-7pm; W-F: 8am-5pm.

—SeaTac 206-277-7200

4040 S 188th St, Suite 201
M, Tu: 8am-7pm; W-F: 8am-5pm.

—Tukwila 206-439-3289

Highline Medical, 13030 Military Rd S
M-W: 8am-8pm; Th, F: 8am-5pm;
Sa: 10am-3pm.

Public Health 206-257-6870

Navos - 1210 SW 136th St, Seattle
M-F: 8:30am-5pm.
Provides medical and mental health services.

Sea Mar Comm. Health 206-812-6140

14434 Ambaum Blvd SW, Suite 5, Burien
M-Sa: 8am-5pm.
Offers diagnosis, treatment, and health management.

DENTAL CARE

Christ Comm. Free Clinic 253-736-2634

925 East Main St, Auburn
One M or F a month: 8am-5pm.
Urgent dental care; serves those without dental insurance. Appointment required.

HealthPoint

Emergency walk-in appointments as schedule permits.

—Auburn 253-735-0166

126 Auburn Ave, Suite #300, Auburn
M-F: 7:15am-5:30pm. Sa: 8:15am-12:30pm.

—Federal 253-874-7646

33431 13th Pl S, Federal Way
M-F: 7:45am-4pm.
Emergency Walk-In: Th: 7:30am-12pm.

—Kent 253-796-4071

403 E Meeker St, Suite #200, Kent
M-F: 7:30am-5:30pm; Sa: 8am-12pm.
Emergency Walk-In: M: 7:15am-12pm.

—Midway 206-870-3600

26401 Pacific Highway S, Suite #101
M-F: 7:30am-5:30pm; Sa: 8:30am-12:30pm.

Sea Mar Community Health

Provides both primary and emergency dental care.

—Burien 206-631-7316

18010 8th Ave S, Suite #416, Burien
M-F: 8am-5pm.

—Des Moines 206-212-4520

2781 S 242nd St, Des Moines
M-F: 8am-5pm.

—Federal Way 253-681-6620

31405 18th Ave S, Federal Way
M-F: 8am-5pm.