

FOOD BANKS

Food banks may serve specific geographic areas. Call ahead for eligibility requirements.

Adra P. Berry Food Bank 425-222-5573

31104 SE 86th St, Issaquah.

Th: 1pm-3pm.

Visit in person. Call any day for information.

Fall City Food Pantry 425-269-8098

4326 337th Pl SE, Fall City

1st & 3rd W: 12pm-1:30pm, 6:30pm-7:30pm.

Visit in person. Proof of address required.

Hopelink

—Bellevue 425-943-7555

14812 Main St, Bellevue

M, Th: 1pm-4pm, 5pm-7pm;

T, W: 10am-3pm.

Serves Bellevue, Mercer Island, and Newcastle residents.

—Kirkland/Northshore 425-889-7880

11011 120th Ave NE, Kirkland

M: 1pm-4pm. T, Th: 1pm-4pm, 5pm-7pm.

W: 10am-3pm.

Operates a food pantry for Kirkland, Kenmore, Bothell, and Woodinville area residents. Call for more information.

—Redmond 425-889-7880

8990 154th Ave NE, Redmond

M, W: 1pm-4pm, T: 10am-3pm,

Th: 10am-12pm.

Serves Redmond and Sammamish areas.

—Shoreline 206-440-7300

17837 Aurora Ave N, Shoreline

T: 10am-3pm, W: 1pm-4pm, 5pm-7pm.

Th: 1pm-4pm.

Serves residents of Shoreline & Lake Forest Park. ID and Proof of address required.

Also serves homeless individuals in area.

—Sno-Valley 425-889-7880

31957 E. Commercial St, Carnation

M: 4pm-6pm, W: 3pm-5pm, Th: 10am-12pm.

Visit in person. Call to register. Serves

Snoqualmie Valley residents.

Issaquah Food Bank 425-392-4123

179 1st Ave SE, Issaquah

Open every other week, M-Th: 1pm-7pm.

Food pantry available to all.

Youth & Family Services 206-275-7611

2040 84th Ave SE, Mercer Island

M-F: 9am-5pm.

Contact program coordinator for eligibility.

Renewal Food Bank 425-736-8132

15022 Bel-Red Rd, Bellevue

M: 12pm-3pm; Tu: 4pm-6:30pm;

W: 10am-1pm.

Visit in person once per week.

Snoqualmie Valley Food Bank 425-888-7832

122 E 3rd St, North Bend

M: 11:30am-12:45pm. Tu: 3pm-6:15pm.

W: 9:30am-4:15pm.

Please Call Ahead.

Woodinville Storehouse 206-595-6419

17110 140th Ave NE, Woodinville

Tu: 6:30pm-7:20pm; Sa: 9am-10:20am.

Visit in person.

HOT MEALS

Crossroads Meal Program 425-452-7300

911 164th Ave NE, Bellevue

M-F: 6pm-7pm.

Provides hot meals for anyone in need.

Issaquah Meals Program 425-679-0342

180 E Sunset Way, Issaquah

M-F: 5pm-6pm.

Visit in person; No ID required.

Open Kitchen 425-883-7553

16540 NE 80th St, Redmond

W: 5pm-7pm.

Provides a free hot meal for anyone in need.

POPY's Café 206-569-7011

14514 20th Ave NE, Shoreline

W: 5pm-6:30pm.

Visit in person. Serves anyone in need.

Sophia Place Day Center 425-896-7385

3032 Bellevue Way NE, Bellevue

Daily: 8am-3pm.

Serves women, with or without children.

Vedic Cultural Center 206-979-8002

1420 228th Ave SE, Sammamish

Daily: 7:30pm-9pm.

Provides a free vegetarian hot meal for anyone.

Vedic Food Truck 425-499-6408

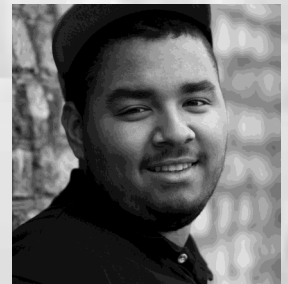
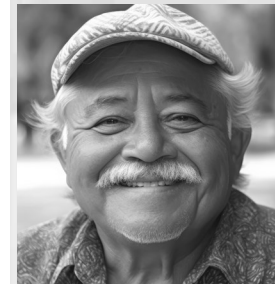
9451 Avondale Road Northeast, Redmond

Th, 6:30pm-8:30pm.

Location is adjacent to bus stop in parking lot.

EAST & NORTH KING COUNTY

Emergency Services



2nd Quarter 2024

Brochures updated quarterly
at www.crisisconnections.org



A SERVICE OF CRISIS CONNECTIONS

FOOD BENEFITS

King County 211 Basic Food Dial 211

M-F: 9am-5pm.

Offers screening and application appointments with a Basic Food Specialist. Call for more information.

Within Reach 888-436-6392

M-Th: 8am-5:30pm; F: 8am-5pm.

Offers a toll-free phone line with screening and application assistance for Basic Food and WIC nutrition programs.

DENTAL CARE

HealthPoint

—Bothell 425-424-6350

10414 Beardslee Blvd, Suite #201

M-F: 7:30am-5:30pm; Sa: 8:30am-12:30pm.

—Redmond 425-883-8000

16225 NE 87th Street Suite 150

Building A-Forest

M-F: 7:30am-4pm;

Every other Sa: 8am-12pm.

International Community Health

—Bellevue 425-373-3030

1050 140th Ave NE.

M-F: 8am-6pm; 4th Sa: 8am-6pm.

—Shoreline 206-533-2660

16549 Aurora Ave North

M-F: 8am-6pm; 3rd Sa: 8am-6pm.

LWTech Dental Clinic 425-739-8130

11605 132nd Ave NE, East Bldg, Room E103,

Kirkland

Call for hours.

Mobile Dental Van Visit Website

Offers mobile dental care options for residents in King who do not have dental insurance. Visit website for more information: www.medicalteams.org/mobiledental

Public Health Dental Clinic 206-477-8000

14350 SE Eastgate Way, Bellevue

M-F: 8am-5pm.

Provides general dental care services for children ages 1-18, and low-income adults who are Medicaid Eligible.

Sea Mar Dental Clinic 425-998-5980

3801 150th Ave SE, Bellevue

M-Sa: 8am-5pm.

Offers dental care on a sliding scale. Call for appointment.

MEDICAL CARE

EvergreenHealth

—Kirkland 425-899-6700

12333 NE 130th Ln, Suite 310

M-F: 8am-5pm; Sa: 8am-12pm.

—Redmond 425-899-2273

8980 161st Ave NE

M-Th: 7am-7pm; F: 7am-6pm;

Sa: 8am-4pm.

—Sammamish 425-898-0305

22850 NE 8th St, Suite 103

M: 7am-7pm; T, W, F: 7am-5pm; Th: 8am-5pm;

Sa: 8:30am-12:30pm.

—Woodinville 425-481-6363

16916 140th Ave NE, Suite 101

M-F: 8am-5pm; Sa: 9am-12pm.

HealthPoint

—Bothell 425-486-0658

10414 Beardslee Blvd, Suite 201

M-W: 8am-8pm; Th, F: 8am-5pm; Sa: 10am-3pm.

—Redmond 425-882-1697

16225 NE 87th St, Suite 150, Bldg. A-Forest

M, Tu: 8am-8pm; W-F: 8am-5pm.

Overlake Medical Clinics

—Bellevue 425-635-6350

400 108th Ave NE, Suite 100

M-F: 7am-6pm.

—Redmond 425-635-6430

16315 NE 74th St

M-F: 7am-5pm.

Public Health - Eastgate 206-477-8000

14350 SE Eastgate Way, Bellevue

M, Tu, Th, F: 8am-5pm; W: Hours vary; call to verify.

Sea Mar Comm. Health 425-460-7140

3801 150th Ave SE, Bellevue

M-Sa: 8am-5pm.

Snoqualmie Ridge Clinic 425-831-2313

35020 SE Kinsey St

M-F: 8am-6pm.

Snoqualmie Valley Hospital 425-831-2333

9801 Frontier Ave SE

M-F: 8am-6pm.

Swedish Medical Center

—Snoqualmie 425-888-2016

37624 SE Fury St., Suite #101

M-F: 8am-6pm; Sa: 8am-12pm.

—Issaquah 425-394-0700

751 NE Blakely Dr. 5th Floor

M-F: 8am-5pm.

VA Outpatient Clinic 800-329-8387

13033 Bel-Red Rd, Suite #210, Bellevue

M-F: 8am-4:30pm. Call for appointment.

Serves Veterans enrolled in VA Puget Sound Healthcare System.

DROP-IN CENTERS

Porchlight 425-289-4044

13668 Southeast Eastgate Way, Bellevue

Daily, 5am-11pm.

Provides a place for homeless men to relax. Provides three meals per day. Additionally offers case management, computer access, clothing, hygiene items, and temporary mail service.

Serves men ages 18 and older; no children.

Friends of Youth 425-298-4846

16625 NE 87th St Ste A-1, Redmond

M, Tu: 9am-3pm, Th-F: 9am-1pm,

Sa-Su: 11am-5pm. W by appointment only.

Serves youth, ages 15-22, who are homeless or at risk of homelessness.

Provides resources, basic needs, a link to case managers, and other services.

God's Li'l Acre Day Center 206-497-0838

12521 33rd Avenue NE, Seattle

M-F: 9am-12pm, 1pm-4pm.

Offers a small neighborhood day center for those in need. Services include: laundry and shower facility, storage of belongings, and access to resources.

New Bethlehem Project 425-315-3873

8045 120th Avenue NE Suite #100, Kirkland

M-F: 10am-2pm.

Day center for homeless families that offers hygiene services, hot meals, and access to computers. Case management offered as well. Families with minor children only, no single adults.

Sophia's Place 425-896-7385

3032 Bellevue Way NE, Bellevue

Daily: 8am-3pm.

Operates a daytime drop-in center for women experiencing homelessness. Offers meals, hygiene facilities, phone and computer access, temporary mail service, and other resources. Single women and women with children are both welcome.