

DROP-IN CENTERS

Arcadia Drop-In Center 253-740-7189

932 Auburn Way S, Auburn
Hours: M-F: 2:30pm-6pm.
Offers youth and young adults aged 12-24 with drop-in services, counseling, and resources. Provides access to basic needs including food, showers, and laundry service.

Catholic Comm. Services 253-893-7895

33505 13th Place S, Suite D, Federal Way
All Ages: M-F: 10am-3pm.
Families with children: Tu, Th: 4pm-7pm.
Provides showers, laundry, computers, mail service, phones, and other services.

Ray of Hope Resource Center 253-833-8925

2806 Auburn Way North, Auburn
M-Sa: 8:30am-8pm. Su: 2pm-8:30pm.
Serves families and individuals. Offers laundry and shower facility on select days, and offers breakfast, lunch, and dinner. Please call ahead.

HOT MEALS

Auburn Food Bank 253-833-8925

100 N Street SE, Auburn
Meals: M: 4:30pm-5pm.
Provides a free to-go dinner to anyone in need.

Calvary Chapel South 253-852-7030

1340 West Smith Street, Kent
Meal: 4th Sa of Month: 11am-1pm.
Provides a hot meal once a month to anyone in need. Also offers clothing and hygiene kits.

Comm. Caregiving Network 253-661-0505

Serves hot meals to anyone in need.

—Christian Faith Center

33645 20th Ave S, Federal Way
Meal: M: 5pm-6pm.

—Church of the Good Shepherd

345 S 312th Street, Federal Way
Meal: Sa: 1pm-2pm.

Hungry Soul Café 253-852-1044

3807 Reith Rd S, Kent
Meal: W: 4:30pm-5:30pm.
Serves a free nutritious dinner once per week to anyone in need.

Kent Community Supper 253-852-2057

Kent Lutheran Church
336 2nd Ave S, Kent
Contact: Tu-F: 10am-2pm. Meal: M: 5pm-6pm.
Serves a free hot dinner once a week. Snack bags may be available during office hours.

Neighbor to Neighbor 253-852-3883

Kent Seventh Day Adventist Church
25213 116th Ave SE, Kent
Sa: 2pm-3pm.
Provides a sack lunch to anyone in need.

Pacific/Algona Comm. Center 253-929-1150

100 3rd Ave SE, Pacific
Office: M-F 8:30am-4:30pm.
General Public: M: 11am-12:30pm.
Seniors Nutrition Lunch: Tu-F: 12pm.
Offers a lunch for seniors, and a separate lunch for the general community.

Renton Community Supper 425-255-5974

720 S Tobin Street, Renton
Meal: M-Th: 4pm-5pm.
Provides a hot meal four days a week.
Available to anyone in need.

CLOTHING

Help Northwest 206-227-5977

404 22nd St SE #D, Auburn
Office Hours: M-F: 1pm-3pm.
Provides clothing, coats, and blankets to residents in the Auburn Valley area experiencing homelessness.

Plateau Outreach Ministries 360-825-8961 x3

1806 Cole St., Enumclaw
W: 9am-12pm.
Provides clothing for residents of Enumclaw and the greater Plateau area.
Clients may visit weekly.

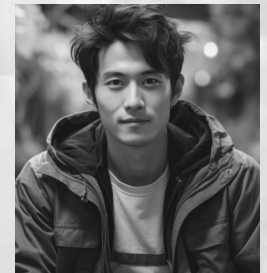
Transform Burien 206-839-6620

15623 Des Moines Memorial Dr. South, Burien
W: 12pm-2pm; Su: 3pm-5pm.
Serves anyone in need, with no geographic restrictions. Offers clothing and toiletries.

Call Ahead First!

SOUTH KING COUNTY

Emergency Services



2nd Quarter 2024

Brochures updated quarterly at
www.crisisconnections.org



A SERVICE OF CRISIS CONNECTIONS

FOOD BANKS

Food banks may serve specific geographic areas. Call ahead for eligibility requirements.

Auburn Food Bank 253-833-8925

930 18th Pl NE, Auburn
M, Tu, Th, F: 9am-1pm.
2nd W: 4:30pm-5:30pm.
Serves Auburn School District residents.

Black Diamond Comm. Center 360-886-1011

31605 3rd Ave, Black Diamond
M-Th: 9am-4pm.
Serves residents of Black Diamond, Covington, Maple Valley, and Ravensdale.

Des Moines Food Bank 206-878-2660

United Methodist Church
22225 9th Ave S, Des Moines
M, W, F: 9am-11:45am; 3rd Tu: 6pm-8pm.
Online order pickup: Tu: 1pm-3pm, by appointment.

Serves Des Moines and parts of Kent, Normandy Park, and SeaTac. Call ahead.

Enumclaw Kiwanis 253-239-7501

1350 Cole St, Enumclaw
M-W, 9am-11:45am.
Serves Enumclaw School District residents. May visit once per month. Curbside service only.

Highline Area Food Bank 206-433-9900

18300 4th Ave S, Burien
Tu: 12pm-2:30pm; Th: 10am-12:30pm;
2nd Tu: 5:30pm-7pm.
Serves Highland area residents. May visit weekly.

Kent Food Bank

—Kent Alliance Center 253-520-3550

515 W Harrison St, Ste. 107, Kent
General: W, F: 10am-1pm.
Seniors 55+: Th 10am-11am.
Serves Kent School District residents; clients may visit twice per month.

—Birch Creek Annex 253-520-3550

12961 SE 275th St, Kent
M: 10am-1pm.
Provides food for Kent School District residents.

Maple Valley Food Bank 425-432-8633

21415 Renton-Maple Valley Rd, Maple Valley
Tu: 10:30am-6pm. W: 10:30am-1pm.
Serves residents of Maple Valley, Black Diamond, and Tahoma School District.
Limited home delivery.

Margie Williams Helping Hands 425-255-1446

4519 NE 10th St, Renton
Sa: 8am-10:30am.
Serves anyone in need.

Muckleshoot Family Resource 253-876-3336

39015 172nd Ave SE, Auburn
M-F: 9am-4pm.
Muckleshoot Tribal members only.
Home Delivery for Elders and disabled adults.

Multi-Service Center 253-838-6810

1200 S 336th St, Federal Way
M, W, F: 10am-2pm; closed on holidays.
Operates food pantry for Federal Way School District residents.

Plateau Outreach Ministries 360-825-8961x3

1806 Cole St, Enumclaw
Pantry: W: 9am-12pm.
Emergency Food: M-Sa: 10am-3pm.
Serves residents of the Enumclaw area.

Salvation Army - Renton 425-255-5969

206 S Tobin St, Renton
M, Tu, Th, F: 9am-11:15am, 1pm-3:15pm.
Serves Renton, Mercer Island, and Skyway.

Tukwila Pantry 206-431-8293

3118 S 140th St, Riverton Park UMC, Tukwila
Tu, Th, Sa: 10am-2pm.
Serves Boulevard Park, Burien, SeaTac, and Tukwila residents.

MEDICAL CARE

HealthPoint

Low cost medical & pharmacy services.

—Auburn 253-735-0166

126 Auburn Ave, Suite 300, Auburn
M-W: 8am-8pm; Th F: 8am-5pm;
Sa: 10am-3pm.

—Federal Way 253-874-7634

33431 13th Pl S, Federal Way
M, W, Th, F: 8am-5pm; Tu: 8am-7pm.

—Kent 253-852-2866

403 E Meeker St, Suite 200, Kent
M-W: 8am-8pm; Th F: 8am-5pm.

—Renton 425-226-5536

200 S 2nd St, Renton
M, Tu: 8am-7pm; W-F: 8am-5pm.

—SeaTac 206-277-7200

4040 S 188th St, Suite 201
M, Tu: 8am-7pm; W-F: 8am-5pm.

—Tukwila 206-439-3289

Highline Clinic, 13030 Military Rd S
M-W: 8am-8pm; Th, F: 8am-5pm;
Sa: 10am-3pm.

Public Health 206-257-6870

Navos - 1210 SW 136th St, Burien
M-F: 8:30am-5pm.
Provides medical and mental health services.

Sea Mar Comm. Health 206-812-6140

14434 Ambaum Blvd SW, Suite 5, Burien
M-Sa: 8am-5pm.
Offers diagnosis, treatment, and health management.

DENTAL CARE

Christ Comm. Free Clinic 253-736-2634

925 East Main St, Auburn
One M or F a month: 8am-5pm.
Urgent dental care; serves those without dental insurance. Appointment required.

HealthPoint

Emergency walk-in appointments as schedule permits.

—Auburn 253-735-0166

126 Auburn Ave, Suite #300, Auburn
M-F: 7:15am-5:30pm. Sa: 8:15am-12:30pm.

—Federal Way 253-874-7646

33431 13th Pl S, Federal Way
M-F: 7:45am-4pm.
Emergency Walk-In: Th: 7:30am-12pm.

—Kent 253-796-4071

403 E Meeker St, Suite #200, Kent
M-F: 7:30am-5:30pm; Sa: 8am-12pm.
Emergency Walk-In: M: 7:15am-12pm.

—Midway 206-870-3600

26401 Pacific Highway S, Suite #101
M-F: 7:30am-5:30pm; Sa: 8:30am-12:30pm.

Sea Mar Community Health

Provides both primary and emergency dental care.

—Burien 206-631-7316

18010 8th Ave S, Suite #416, Burien
M-F: 8am-5pm.

—Des Moines 206-212-4520

2781 S 242nd St, Des Moines
M-F: 8am-5pm.

—Federal Way 253-681-6620

31405 18th Ave S, Federal Way
M-F: 8am-5pm.